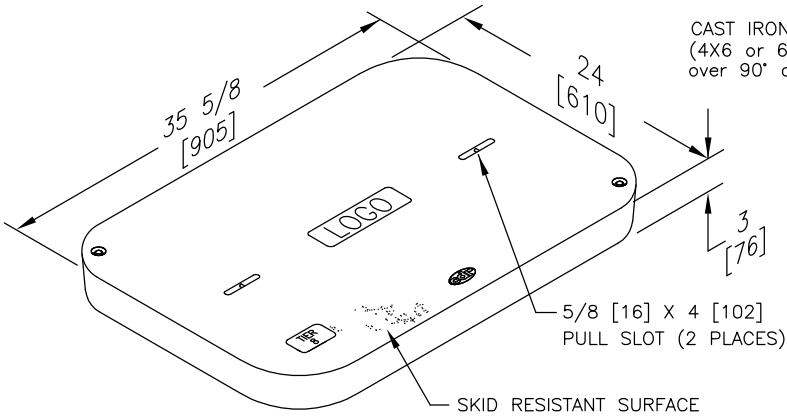


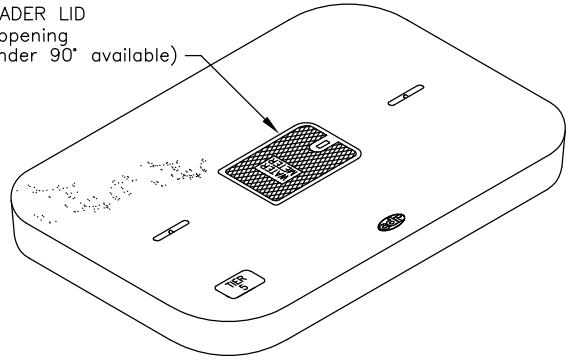
SPECIFICATIONS/DATA

24" X 36" STRAIGHT WALL STYLE (STACKABLE) ASSEMBLY



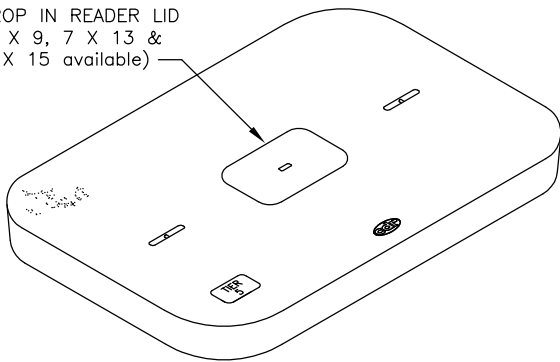
COVER

CAST IRON READER LID
(4X6 or 6X9 opening
over 90° or under 90° available)



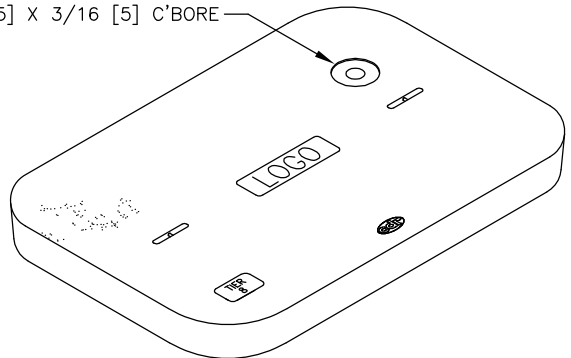
COVER W/READER LID

DROP IN READER LID
(6 X 9, 7 X 13 &
9 X 15 available)



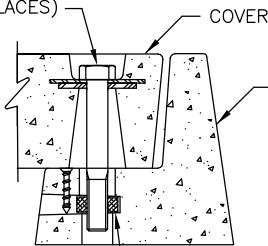
COVER W/DROP IN READER LID

Ø2 [51] TOUCH READER HOLE
w/Ø4 1/8 [105] X 3/16 [5] C'BORE



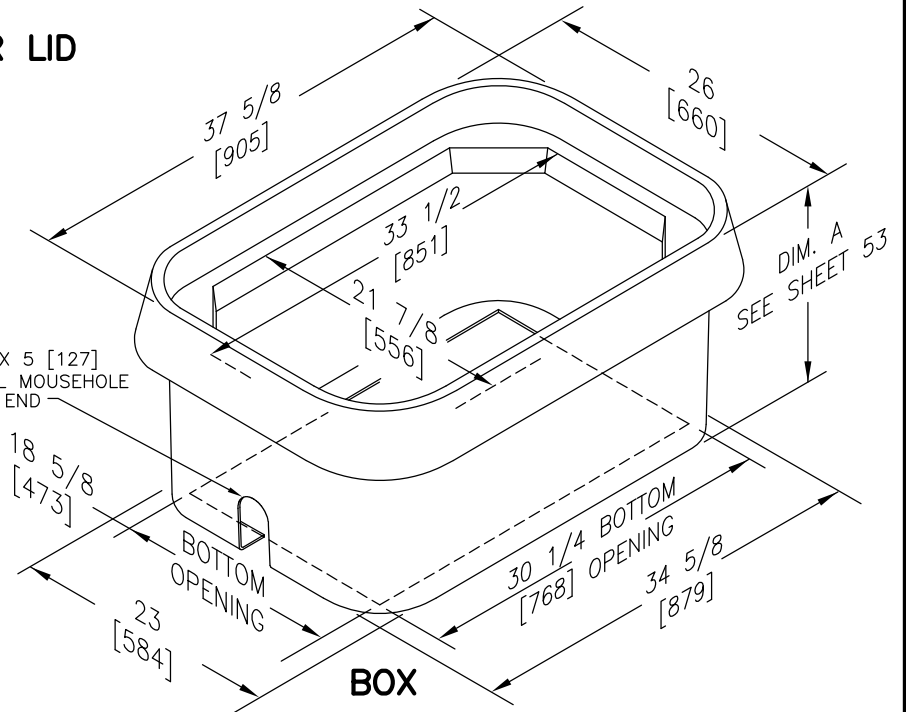
COVER W/TOUCH READER HOLE

1/2-13 UNC SS
CAPTIVE PENTA HEAD
BOLT (2 PLACES)



CAPTIVE BOLT DETAIL

HEX HEAD BOLTS ARE
AVAILABLE ON REQUEST



Dimensions in brackets are in millimeters

SPECIFICATIONS/DATA

24" X 36" STRAIGHT WALL STYLE (STACKABLE) ASSEMBLY

COVERS Bolt down covers have S.S. Captive Penta Head Bolts [Blank unless logo is specified]
(Hex Head Bolts are available – change 2nd digit in cover part no. to "2")

DESCRIPTION	PART NO.	Old Catalog No.	WEIGHT# LBS./kg.	DESIGN/TEST LOAD#	ANSI TIER
Tier 8 w/2 Bolts	C10243603A	C10-2436-03	86/39	8,000/12,000	8
Tier 8 No Bolt Down	C00243603A	C00-2436-03	86/39	8,000/12,000	8
Tier 15 w/2 Bolts	C12243603A	C12-2436-03	94/43	15,000/22,500	15
Tier 15 No Bolt Down	C02243603A	C02-2436-03	94/43	15,000/22,500	15
Tier 22 w/2 Bolts	C16243603A	special number	94/43	22,500/33,750	22
Tier 22 No Bolt Down	C06243603A	special number	94/43	22,500/33,750	22
No Bolts w/4x6 Meter Lid (Over 90)	C08243603C	C00-2436-3C	90/41	5,000/7,500	5
Bolts w/4x6 Meter Lid (Over 90)	C18243603C	C10-2436-3C	90/41	5,000/7,500	5
No Bolts w/4x6 Meter Lid (Under 90)	C08243603D	C00-2436-3C	90/41	5,000/7,500	5
Bolts w/4x6 Meter Lid (Under 90)	C18243603D	C10-2436-3C	90/41	5,000/7,500	5
No Bolts w/6x9 Meter Lid (Over 90)	C08243603E	C00-2436-3C	90/41	5,000/7,500	5
Bolts w/6x9 Meter Lid (Over 90)	C18243603E	C10-2436-3C	90/41	5,000/7,500	5
No Bolts w/6x9 Meter Lid (Under 90)	C08243603F	C00-2436-3C	90/41	5,000/7,500	5
Bolts w/6x9 Meter Lid (Under 90)	C18243603F	C10-2436-3C	90/41	5,000/7,500	5
No Bolts w/Touch Reader Hole	C00243603P	C00-2436-3TR	86/39	8,000/12,000	8
Bolts w/Touch Reader Hole	C10243603P	C10-2436-3TR	86/39	8,000/12,000	8
No Bolts w/6x9 Drop In Reader Lid	C08243603T	C00-2436-3E	94/43	5,000/7,500	5
Bolts w/6x9 Drop In Reader Lid	C18243603T	C10-2436-3E	94/43	5,000/7,500	5
No Bolts w/7x13 Drop In Reader Lid	C08243603U	C00-2436-3E	94/43	5,000/7,500	5
Bolts w/7x13 Drop In Reader Lid	C18243603U	C10-2436-3E	94/43	5,000/7,500	5
No Bolts w/9x15 Drop In Reader Lid	C08243603V	C00-2436-3E	94/43	5,000/7,500	5
Bolts w/9x15 Drop In Reader Lid	C18243603V	C10-2436-3E	94/43	5,000/7,500	5

Covers must be used with equivalent tier boxes or higher (example a Tier 15 cover may not be used with Tier 8 box).

SPECIFICATIONS/DATA

24" X 36" STRAIGHT WALL STYLE (STACKABLE) ASSEMBLY

BOXES (Stackable with self-aligning corrosion resistant replaceable nuts)

DESCRIPTION	PART NO.	Old Catalog No.	DIM. A IN./mm.	WEIGHT# LBS./kg.	DESIGN/TEST LOAD#	ANSI TIER
Tier 8	B13243618A	B13-2436-18	18/457	100/45	8,000/12,000	8
	B13243624A	B13-2436-24	24/610	109/49	8,000/12,000	8
	B13243630A	B13-2436-30	30/762	118/54	8,000/12,000	8
	B13243642A	B13-2436-42	42/1067	136/62	8,000/12,000	8
Tier 15	B14243618A	B14-2436-18	18/457	105/48	15,000/22,500	15
	B14243624A	B14-2436-24	24/610	114/52	15,000/22,500	15
	B14243630A	B14-2436-30	30/762	123/56	15,000/22,500	15
Tier 22	B14243642A	B14-2436-42	42/1067	141/64	15,000/22,500	15
	B16243618A	special number	18/457	105/48	22,500/33,750	22
	B16243624A	special number	24/610	114/52	22,500/33,750	22
	B16243630A	special number	30/762	123/56	22,500/33,750	22
Tier 8 Solid Bottom	B16243642A	special number	42/1067	141/64	22,500/33,750	22
	B13243618B	B13-2436-18B	18/457	107/49	8,000/12,000	8
	B13243624B	B13-2436-24B	24/610	116/53	8,000/12,000	8
	B13243630B	B13-2436-30B	30/762	125/57	8,000/12,000	8
Tier 15 Solid Bottom	B13243642B	B13-2436-42B	42/1067	143/65	8,000/12,000	8
	B14243618B	B14-2436-18B	18/457	112/51	15,000/22,500	15
	B14243624B	B14-2436-24B	24/610	121/55	15,000/22,500	15
	B14243630B	B14-2436-30B	30/762	130/59	15,000/22,500	15
Tier 22 Solid Bottom	B14243642B	B14-2436-42B	42/1067	148/68	15,000/22,500	15
	B16243618B	special number	18/457	112/51	22,500/33,750	22
	B16243624B	special number	24/610	121/55	22,500/33,750	22
	B16243630B	special number	30/762	130/59	22,500/33,750	22
Tier 8 w/ Gasket*	B16243642B	special number	42/1067	148/68	22,500/33,750	22
	B13243618G	B13-2436-18G	18/457	100/45	8,000/12,000	8
	B13243624G	B13-2436-24G	24/610	109/49	8,000/12,000	8
	B13243630G	B13-2436-30G	30/762	118/54	8,000/12,000	8
Tier 15 w/ Gasket*	B13243642G	B13-2436-42G	42/1067	136/62	8,000/12,000	8
	B14243618G	B14-2436-18G	18/457	105/48	15,000/22,500	15
	B14243624G	B14-2436-24G	24/610	114/52	15,000/22,500	15
	B14243630G	B14-2436-30G	30/762	123/56	15,000/22,500	15
Tier 22 w/ Gasket*	B14243642G	B14-2436-42G	42/1067	141/64	15,000/22,500	15
	B16243618G	special number	18/457	105/48	22,500/33,750	22
	B16243624G	special number	24/610	114/52	22,500/33,750	22
	B16243630G	special number	30/762	123/56	22,500/33,750	22
Tier 8 Solid Bottom w/ Gasket*	B16243642G	special number	42/1067	141/64	22,500/33,750	22
	B132436500	B13-2436-18BG	18/457	107/49	8,000/12,000	8
	B132436501	B13-2436-24BG	24/610	116/53	8,000/12,000	8
	B132436502	B13-2436-30BG	30/762	125/57	8,000/12,000	8
Tier 15 Solid Bottom w/ Gasket*	B132436504	B13-2436-42BG	42/1067	143/65	8,000/12,000	8
	B142436500	B14-2436-18BG	18/457	112/51	15,000/22,500	15
	B142436501	B14-2436-24BG	24/610	121/55	15,000/22,500	15
	B142436502	B14-2436-30BG	30/762	130/59	15,000/22,500	15
Tier 22 Solid Bottom w/ Gasket*	B142436504	B14-2436-42BG	42/1067	148/68	15,000/22,500	15
	B162436500	special number	18/457	112/51	22,500/33,750	22
	B162436501	special number	24/610	121/55	22,500/33,750	22
	B162436502	special number	30/762	130/59	22,500/33,750	22
Tier 8 w/ Standard Mouseholes	B162436504	special number	42/1067	148/68	22,500/33,750	22
	B13243618M	B13-2436-18	18/457	100/45	8,000/12,000	8
	B13243624M	B13-2436-24	24/610	109/49	8,000/12,000	8
	B13243630M	B13-2436-30	30/762	118/54	8,000/12,000	8
Tier 15 w/ Standard Mouseholes	B13243642M	B13-2436-42	42/1067	136/62	8,000/12,000	8
	B14243618M	B14-2436-18	18/457	105/48	15,000/22,500	15
	B14243624M	B14-2436-24	24/610	114/52	15,000/22,500	15
	B14243630M	B14-2436-30	30/762	123/56	15,000/22,500	15
Tier 22 w/ Standard Mouseholes	B14243642M	B14-2436-42	42/1067	141/64	15,000/22,500	15
	B16243618M	special number	18/457	105/48	22,500/33,750	22
	B16243624M	special number	24/610	114/52	22,500/33,750	22
	B16243630M	special number	30/762	123/56	22,500/33,750	22
	B16243642M	special number	42/1067	141/64	22,500/33,750	22

*Gaskets reduce the inflow of fluids but do not make the enclosure water tight.

● Loadings comply with ANSI/SCTE 77 (See page 3 & 4)