



WESTERN POWER PRODUCTS

THREE PHASE PRIMARY VOLTAGE SECTIONALIZING CABINETS

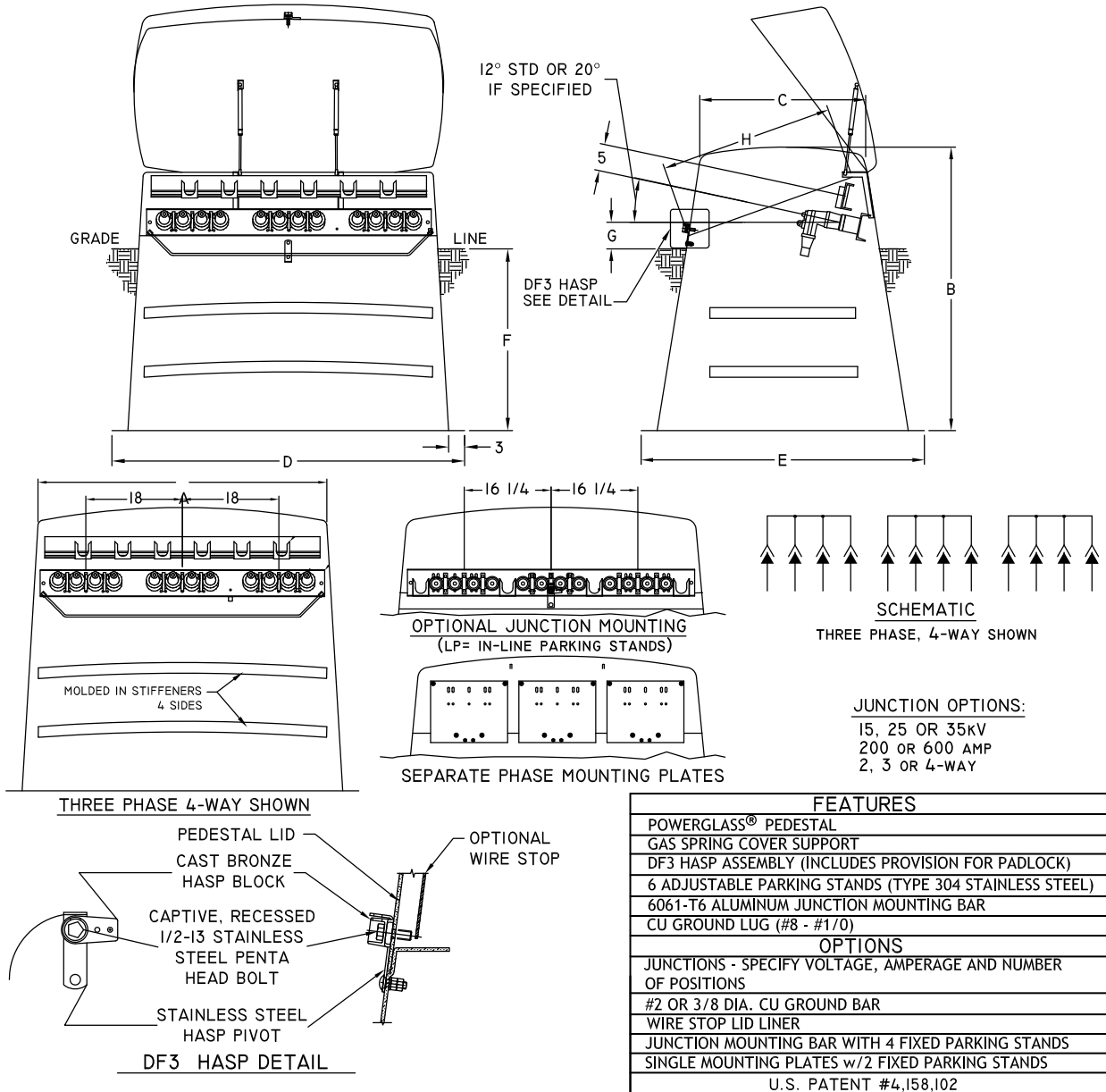
- **STRONG** – Powerglass® enclosures have a unique top to bottom tapered elliptical shape with stiffeners molded into the walls.
- **SMOOTH-TOP SERIES** – Available on select cabinets. These Smooth-Top cabinets provide an aesthetically pleasing installation, and the smooth surface ensures that stickers are easy to attach.
- **CORROSION RESISTANT** – Powerglass® is unaffected by fertilizer spray, salt air or chemicals. All hardware is non-ferrous. No rusting as with steel cabinets.
- **DURABLE** – Ultraviolet stabilized gel coat provides a lifetime finish. Fire retardant-Powerglass® will NOT support combustion.
- **EXCLUSIVE** – Adjustable parking stands permit movement of elbows from connected to parked positions with cable movement as little as 6 1/2" (Standard). Optional mounting plates and park stands available.
- **COLORS** – Standard colors are Willow (light) green and Munsell (dark) green. Special colors are available.
- **INTEGRAL GROUND SLEEVE** – low-profile assembly for aesthetic appeal.
- **REMOVABLE TOP** – Allows for (ALL AROUND) 360° access for extensive service.
- **SAFE** – Gas spring assisted lid opening with removable “hidden” stainless steel hinges. Meets ANSI C57.12.28 and C37.72 specifications.
- **OPTIONS** – Caution/Warning stickers or other marking, Cooper ground bar and Wire stop Lid Liner.
- **RUS APPROVED**

BUILD-A-PART NUMBER DETAILS

| 1 Item | 2 Phase | 3, 4 Length | 5, 6 Width | 7, 8 Depth | 9 Color | 10 Lock | 11 Voltage | 12 Amperage | 13, 14 Options | 15 Options |
|---------------------------------|------------|----------------|-------------------------|---------------|-------------------------------------|--|---------------------|---------------------|---------------------|-------------------|
| P (Fiberglass Primary Pedestal) | 0 (None) | 54 | 25 | 41 | A (Safety Orange) | A (Standard Lock non-electrical applications) | 0 (None) | 0 (None) | JA (Standard) | A (Standard) |
| R (Smooth-Top Primary Pedestal) | 3 (Three) | 54 | 25 | 50 | B (Brownstone) | D (DF3-Penta-bolt, padlock, dead-front applications) | 1 (15kV) | 2 (200 AMP) | J2 (2-way Junction) | B (Grounding Lug) |
| | | 54 | 25 | 56 | D (Desert Tan) | | 2 (25 kV) | 6 (600 AMP) | J3 (3-way Junction) | C (#2 Ground Bar) |
| | | 54 | 31 | 41 | E (Earth Brown) | | 3 (35 kV) | J4 (4-way Junction) | D (3/8 Ground Bar) | |
| | | 54 | 31 | 50 | M (Munsell Green) | | J5 (5-way Junction) | | | |
| | | 54 | 31 | 56 | W (Willow Green) | | J6 (6-way Junction) | | | |
| | | 67 | 31 | 46 | MP (Separate Phase Mounting Plates) | | | | | |
| | | 67 | 31 | 55 | LP (In-Line Parking Stands) | | | | | |
| 67 | 31 | 61 | SM (Slant Mounting Bar) | | | | | | | |



WESTERN POWER PRODUCTS



| PART NUMBER | OLD MODEL NUMBER ^a | VOLTAGE | Dimensions (inches) | | | | | | | | WT. |
|------------------------|-------------------------------|--------------------------|---------------------|--------|----|----|----|----|---|--------|-----|
| | | | A | B | C | D | E | F | G | H | |
| P3542541WD | SPM-540-38-WG-DF3 | 15 OR 25 kV | 54 | 41 | 25 | 66 | 42 | 22 | 5 | 24 5/8 | 130 |
| P3542550WD | SPM-540-47-WG-DF3 | 15 OR 25 kV | 54 | 49 1/2 | 25 | 68 | 45 | 31 | 5 | 24 5/8 | 160 |
| P3542556WD | SPM-540-53-WG-DF3 | 15 OR 25 kV | 54 | 55 1/2 | 25 | 69 | 47 | 37 | 5 | 24 5/8 | 200 |
| P3543141WD | SPM-540-38-6D-WG-DF3 | 15 OR 25 kV | 54 | 41 | 31 | 66 | 48 | 22 | 5 | 32 1/2 | 145 |
| P3543150WD | SPM-540-47-6D-WG-DF3 | 15 OR 25 kV | 54 | 49 1/2 | 31 | 68 | 51 | 31 | 5 | 32 1/2 | 180 |
| P3543156WD | SPM-540-53-6D-WG-DF3 | 15 OR 25 kV | 54 | 55 1/2 | 31 | 69 | 53 | 37 | 5 | 32 1/2 | 215 |
| P3673146WD | SPM-670-38-WG-DF3 | 15 OR 25 kV ^b | 67 | 46 | 31 | 80 | 46 | 27 | 5 | 32 1/2 | 205 |
| P3673155WD | SPM-670-47-WG-DF3 | 15 OR 25 kV ^b | 67 | 55 | 31 | 82 | 50 | 36 | 5 | 32 1/2 | 220 |
| P3673161WD | SPM-670-53-WG-DF3 | 15 OR 25 kV ^b | 67 | 61 | 31 | 83 | 52 | 42 | 5 | 32 1/2 | 240 |
| SMOOTH-TOP PART NUMBER | OLD MODEL NUMBER ^a | VOLTAGE | Dimensions (inches) | | | | | | | | WT. |
| | | | A | B | C | D | E | F | G | H | |
| R3542541WD | SPS-540-38-WG-DF3 | 15 OR 25 kV | 54 | 41 | 25 | 66 | 42 | 22 | 5 | 24 5/8 | 130 |
| R3542550WD | SPS-540-47-WG-DF3 | 15 OR 25 kV | 54 | 49 1/2 | 25 | 68 | 45 | 31 | 5 | 24 5/8 | 160 |
| R3542556WD | SPS-540-53-WG-DF3 | 15 OR 25 kV | 54 | 55 1/2 | 25 | 69 | 47 | 37 | 5 | 24 5/8 | 200 |

a. Willow green "W" part numbers illustrated. Change to "M" for Munsell green color.
 b. 15 or 25 kV is standard. Add "35" to end of part# to specify 35 kV mounting bar. (See Build-A-Part Details Page 16)