



WESTERN POWER PRODUCTS

TWO PHASE PRIMARY VOLTAGE SECTIONALIZING CABINETS

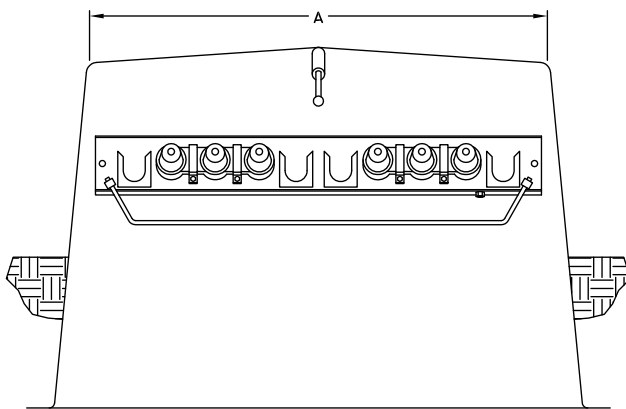
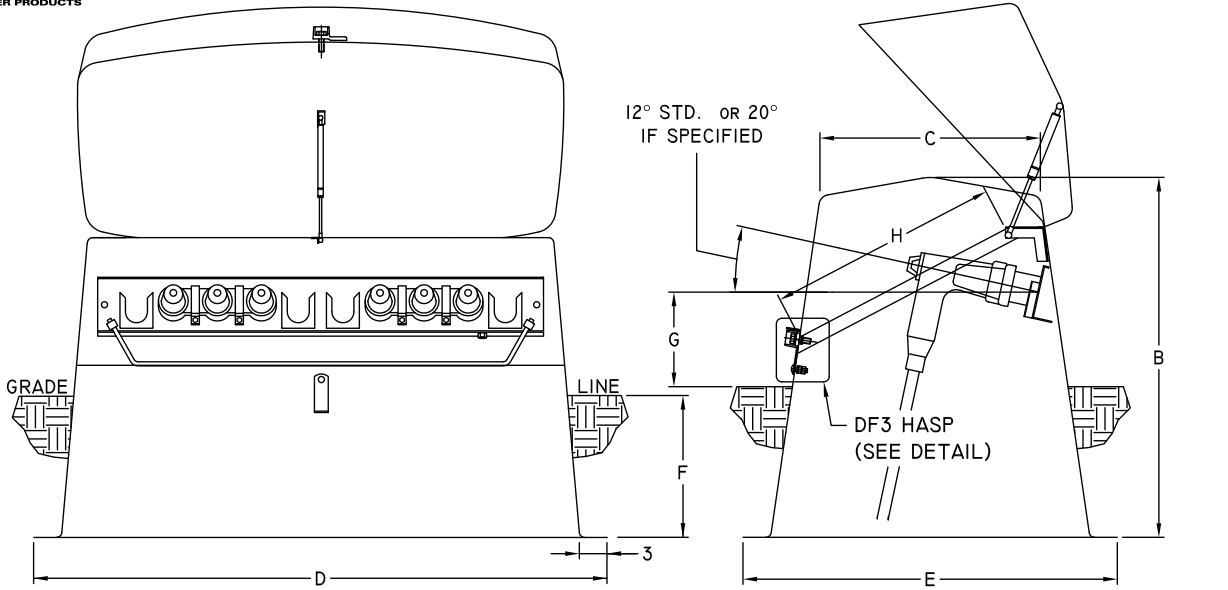
- **STRONG** – Powerglass® enclosures have a unique top to bottom tapered elliptical shape with stiffeners molded into the walls.
- **CORROSION RESISTANT** – Powerglass® is unaffected by fertilizer spray, salt air or chemicals. All hardware is non-ferrous. No rusting as with steel cabinets.
- **DURABLE** – Ultraviolet stabilized gel coat provides a lifetime finish. Fire retardant-Powerglass® will NOT support combustion.
- **COLORS** – Standard colors are Willow (light) green and Munsell (dark) green. Special colors are available.
- **INTEGRAL GROUND SLEEVE** – low-profile assembly for aesthetic appeal.
- **REMOVABLE TOP** – Allows for (ALL AROUND) 360° access for extensive service.
- **SAFE** – Gas spring assisted lid opening with removable “hidden” stainless steel hinges. Meets ANSI C57.12.28 and C37.72 specifications.
- **OPTIONS** – Caution/Warning stickers or other marking, Cooper ground bar and Wire stop Lid Liner.
- **RUS APPROVED**

BUILD-A-PART NUMBER DETAILS

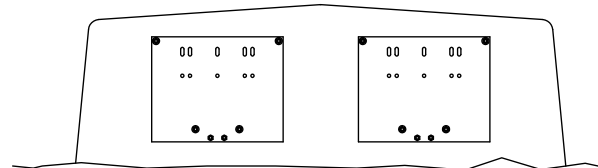
1 Item	2 Phase	3, 4 Length	5, 6 Width	7, 8 Depth	9 Color	10 Lock	11 Voltage	12 Amperage	13, 14 Options	15 Options
P (Fiberglass Primary Pedestal)	2 (Two)	42	25	32	A (Safety Orange)	A (Standard Lock non-electrical applications)	0 (None)	0 (None)	JA (Standard)	A (Standard)
					B (Brownstone)	D (DF3-Penta-bolt, padlock, dead-front applications)	1 (15kV)	2 (200 AMP)	J2 (2-way Junction)	B (Grounding Lug)
					D (Desert Tan)		2 (25 kV)	6 (600 AMP)	J3 (3-way Junction)	C (#2 Ground Bar)
					E (Earth Brown)		3 (35 kV)		J4 (4-way Junction)	D (3/8 Ground Bar)
					M (Munsell Green)					
					W (Willow Green)					



WESTERN POWER PRODUCTS

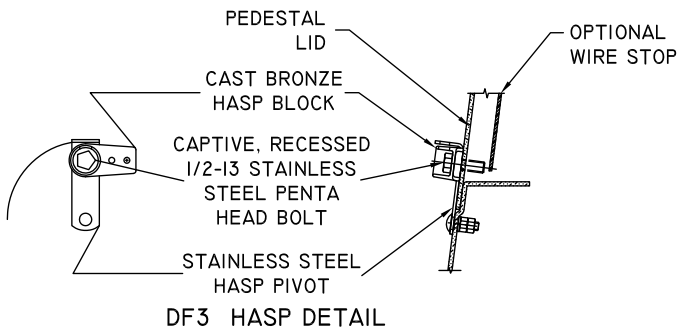


TWO PHASE 3-WAY SHOWN

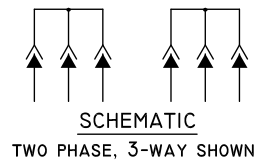


OPTIONAL SINGLE MOUNTING PLATES

FEATURES	
POWERGLASS® PEDESTAL	
GAS SPRING COVER SUPPORT	
DF3 HASP ASSEMBLY (INCLUDES PROVISION FOR PADLOCK)	
FIXED PARKING STANDS (TYPE 304 STAINLESS STEEL)	
STAINLESS STEEL JUNCTION MOUNTING BAR	
CU GROUND LUG (#8 - #1/0)	
OPTIONS	
JUNCTIONS - SPECIFY VOLTAGE, AMPERAGE AND NUMBER OF POSITIONS	
#2 OR 3/8 DIA. CU GROUND BAR	
WIRE STOP LID LINER	
SINGLE MOUNTING PLATES w/2 FIXED PARKING STANDS	
U.S. PATENT #4,158,102	



DF3 HASP DETAIL



SCHEMATIC
TWO PHASE, 3-WAY SHOWN

JUNCTION OPTIONS:
15 OR 25 KV
200 OR 600 AMP
2 OR 3-WAY

PART NUMBER ^a	OLD MODEL NUMBER	Dimensions (inches)								
		A	B	C	D	E	F	G	H	WT.
P2422532WD	SPM-420-31-WG-DF3	42	31 1/2	25	53	42	13	8 5/8	24 5/8	105
P2422542WD	SPM-420-41-WG-DF3	42	41 1/2	25	55	45	23	8 5/8	24 5/8	145
P2422550WD	SPM-420-47-WG-DF3	42	49 1/2	25	56	47	31	8 5/8	24 5/8	175

a. Willow green "W" part numbers illustrated. Change to "M" for Munsell green color.